



Russian olive (*Elaeagnus angustifolia*) is a perennial tree or shrub that is native in Europe and Asia. The plant has olive-shaped fruits, silver color at first then becoming yellow-red when mature. Russian olive can reproduce by seed or root suckers. Seeds are readily spread by birds and can remain viable for up to 3 years. Spring moisture and slightly alkaline soil tend to favor seedling growth. The plant's extensive root system sprouts root suckers frequently. The tree can reach up to 30 feet in height with branches that have 1 to 2 inch thorns. Leaves are 2 to 3 inches long, alternate, narrow, and have simple blades with smooth edges. The leaf's lower surface is silvery white, while the upper surface is light green in color. Flowers are 4 small sepals in light yellow clusters, fragrant, and appear May through June. Fruits mature from September to November. Russian olive twigs are flexible,

reddish, and have surfaces coated with gray and scaly pubescence, becoming smooth.

Once thought to be a beneficial windbreak tree, it since has been deemed detrimental to the environment. Russian olive can grow in a variety of soil and moisture conditions, but prefers open, moist, riparian zones. It is shade tolerant and can be found along streams, floodplains, fields and open areas up to approximately 8,000 feet in elevation. Russian-olive can outcompete native plants, interfere with natural plant succession and nutrient cycling, and tax water reserves. Because Russian olive is capable of fixing nitrogen in its roots, it can grow on bare, mineral substrates and dominate riparian vegetation. Although Russian olive provides a plentiful source of edible fruits for birds, ecologists have found that bird species richness is actually higher in riparian areas dominated by native vegetation.

The key to effective control of Russian olive is preventing establishment of the trees or shrubs. If plants are already present, control options include cut-stump treatments and mechanical mowing. These treatments depend on size and location of the plant. Details on the back of this sheet can help you create a management plan compatible with your site ecology.



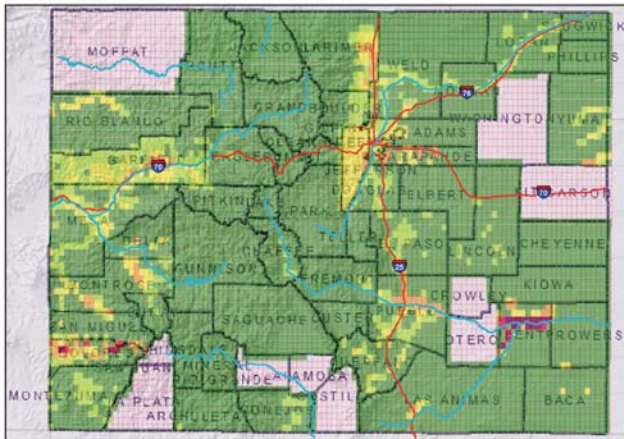
Russian Olive

Elaeagnus angustifolia

Russian Olive
Elaeagnus angustifolia

2013 Quarterquad Survey
Distribution and Abundance
In Colorado

64,150+ Infested Acres



Acres estimates supplied by County Weed Coordinators and compiled by the Colorado Department of Agriculture.

Russian olive is designated as a “List B” species in the Colorado Noxious Weed Act. It is required to be either eradicated, contained, or suppressed depending on the local infestations. For more information visit www.colorado.gov/ag/weeds and click on the Noxious Weed Management Program. Or call the State Weed Coordinator at the Colorado Department of Agriculture, Conservation Services Division, 303-239-4100.

Key ID Points

1. Leaves are silvery white.
2. Branches have 1 to 2 inch thorns.
3. Yellow-red fruits on mature plants.
4. Mature trees have shedding, reddish-brown bark.

Integrated Weed Management Recommendations

Integrated weed management offers the most effective combination of control efforts through the “cut stump” treatment. Trees are cut down with a hatchet or chainsaw, then immediately treated with an approved herbicide on the surface of the cut stump. The most effective timing is late summer/early fall for herbicide transfer into the roots.



© John Randall, TNC



© James Miller, USFS



© Chris Ness, Adams County



© Scott Peterson, USDA

Russian olive

Elaeagnus angustifolia

CULTURAL

Replace Russian olives with native trees. Prevent establishment of new trees by removing seedlings and saplings before they mature. Contact your local Natural Resources Conservation Service for recommendations of other possible trees or shrubs.

BIOLOGICAL

Tubercularia canker is an unapproved biocontrol. However, it overwinters on infected stems and spreads via rain-splash, animals, or pruning implements to open wounds in the bark. Infected tissue becomes discolored or sunken. Entire stems may be girdled and killed, and the disease can deform or kill stressed plants over time.

MECHANICAL

Saplings can be pulled with a weed-wrench or cut with brush-cutters. Trees can be girdled or cut with chainsaws. However, stump sprouting commonly occurs after cutting down the tree; and stump excavation without removing all parts of the roots can result in root sprouting. Treating cut-stumps with an herbicide can eliminate sprouting. Stump burning is practical when conditions support a long, hot fire and most effective in summer or early fall. Saplings are most sensitive to mechanical treatment.

CHEMICAL

The table below includes recommendations for herbicides that can be applied to range and pasturelands. Always read, understand, and follow the label directions. The herbicide label is the LAW!

HERBICIDE	RATE	APPLICATION TIMING
Triclopyr (Garlon 4, Remedy)	Undiluted (100% solution)	Apply to the cambial layer of the tree immediately after the cut-stump treatment.
Imazapyr + Water (Habitat + Water or Arsenal + Water)	Diluted by mixing 8 to 12 fl. oz / 1 gallon of water	Apply to the cambial layer of the tree immediately after the cut-stump treatment.
Imazapyr (Habitat or Arsenal)	4 to 6 pt./acre	Broadcast spray/spraying individual trees; low or high volume spray.